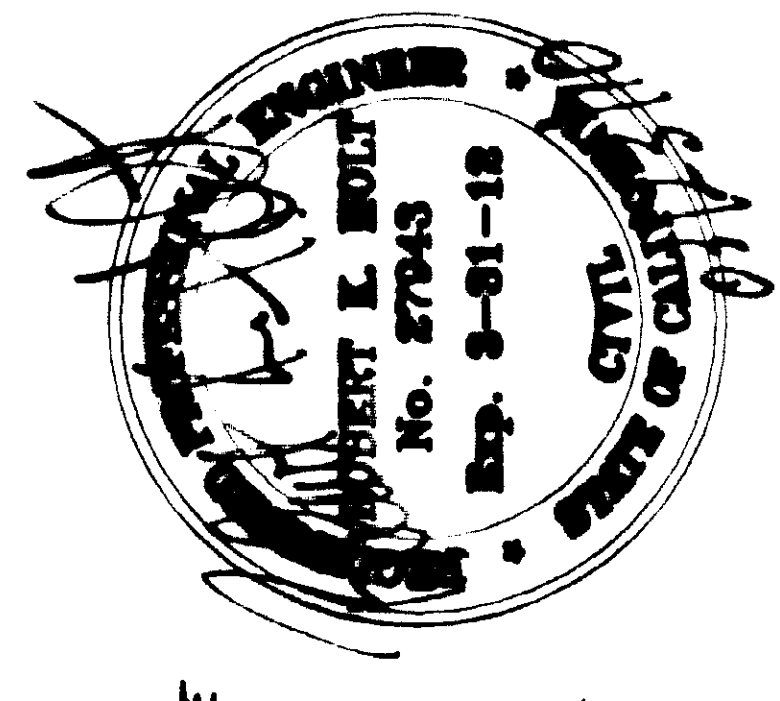
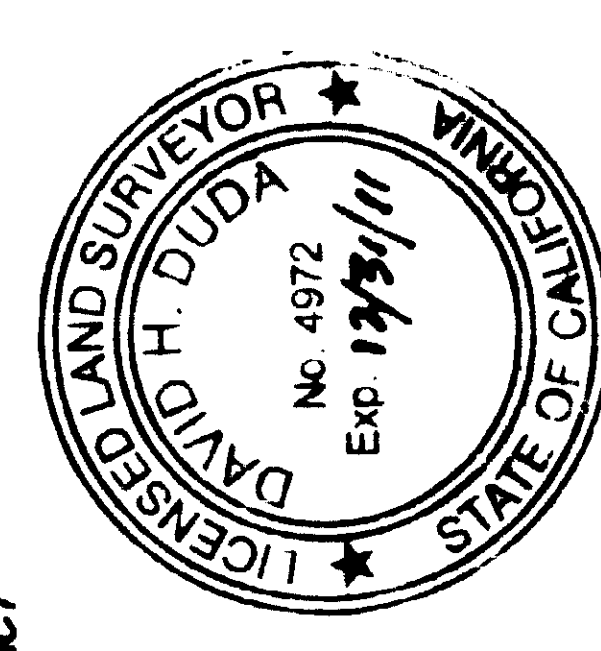


IN THE UNINCORPORATED TERRITORY OF THE COUNTY OF RIVERSIDE, STATE OF CALIFORNIA
Record of Survey
BEING A PORTION OF ACCRETION LAND LYING IN SECTION 6, TOWNSHIP 5 SOUTH, RANGE 24 EAST, SBM
JANUARY, 2010
THE HOLT GROUP

SHEET 1 OF 1 SHEET
RECORDER'S STATEMENT
FILED THIS 2ND DAY OF APRIL 2010
AT THE COUNTY CLERK'S OFFICE
IN THE COUNTY OF RIVERSIDE, CALIFORNIA
NO. 2010-0152386
FEE \$10.00
LARRY W. WARD, ASSESSOR-COUNTY CLERK-RECORDER
BY: *[Signature]* DEPUTY

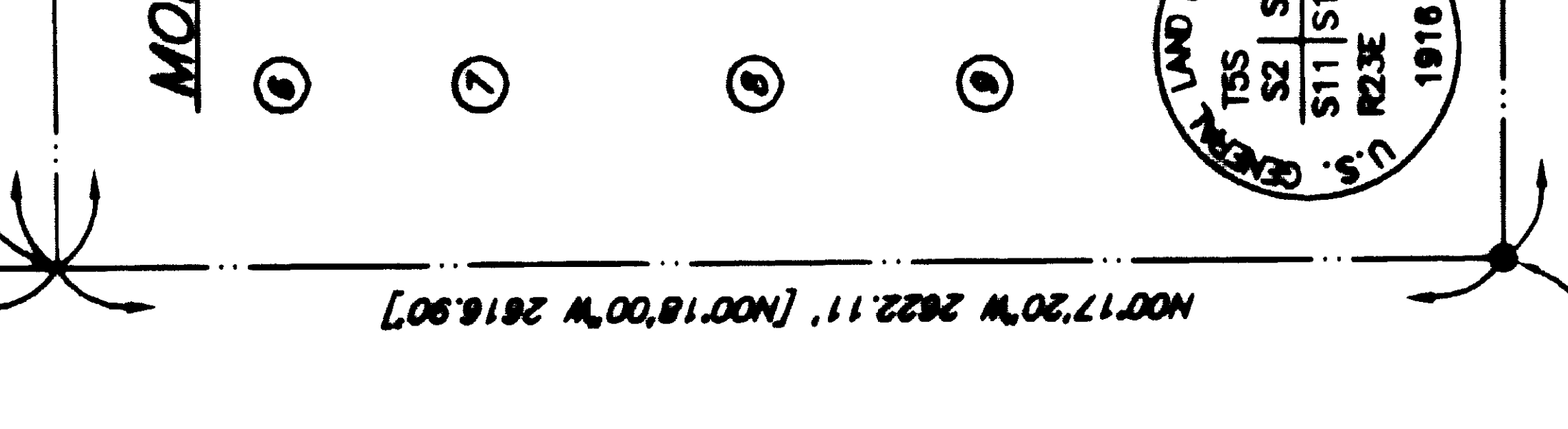
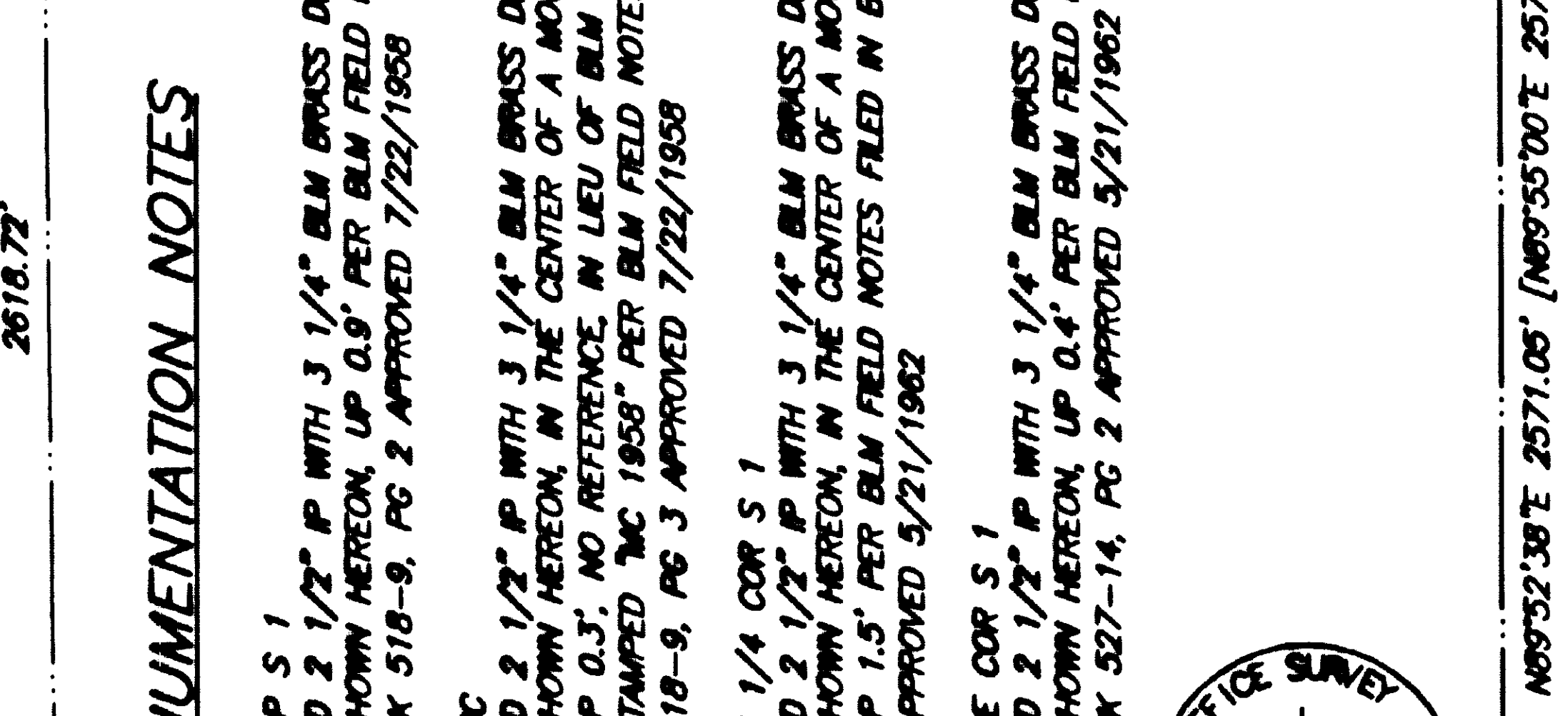
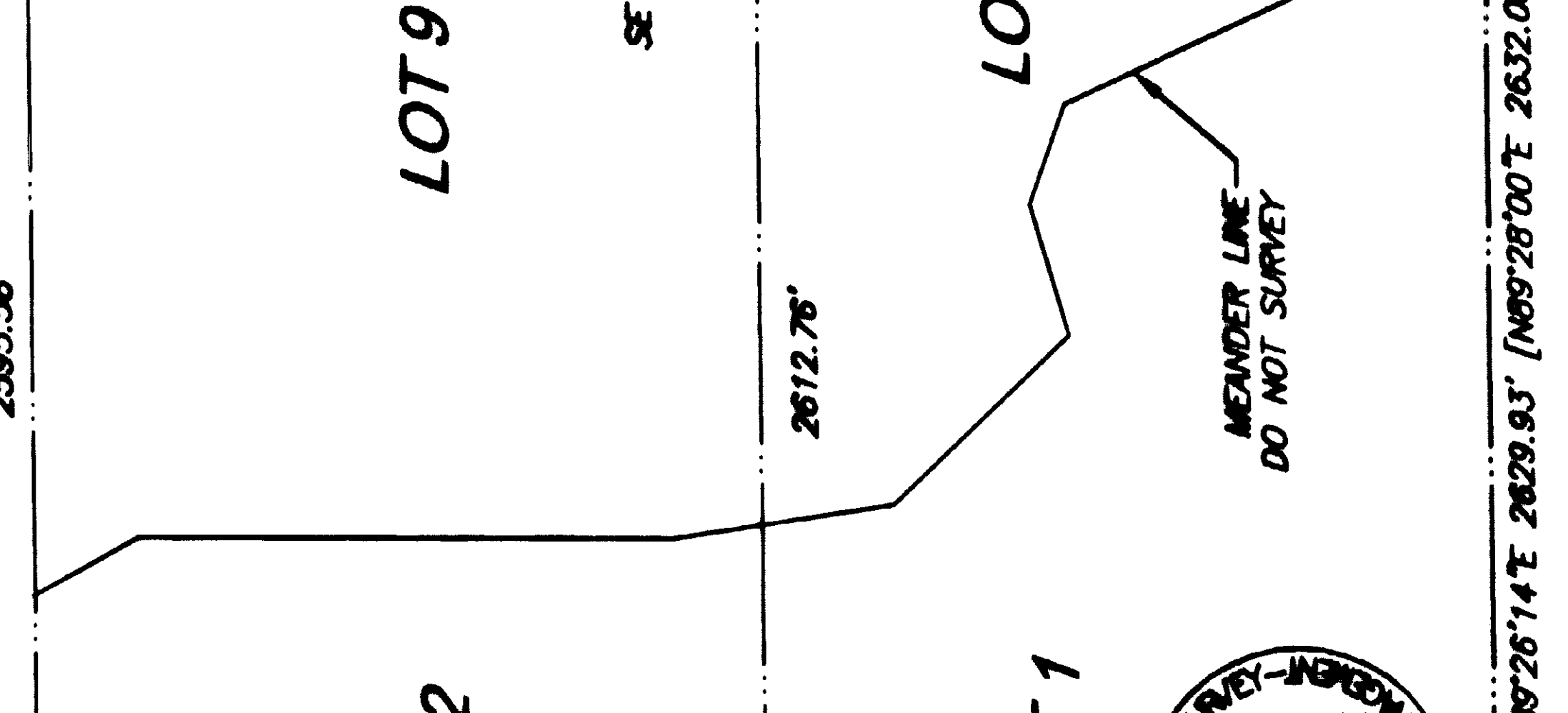
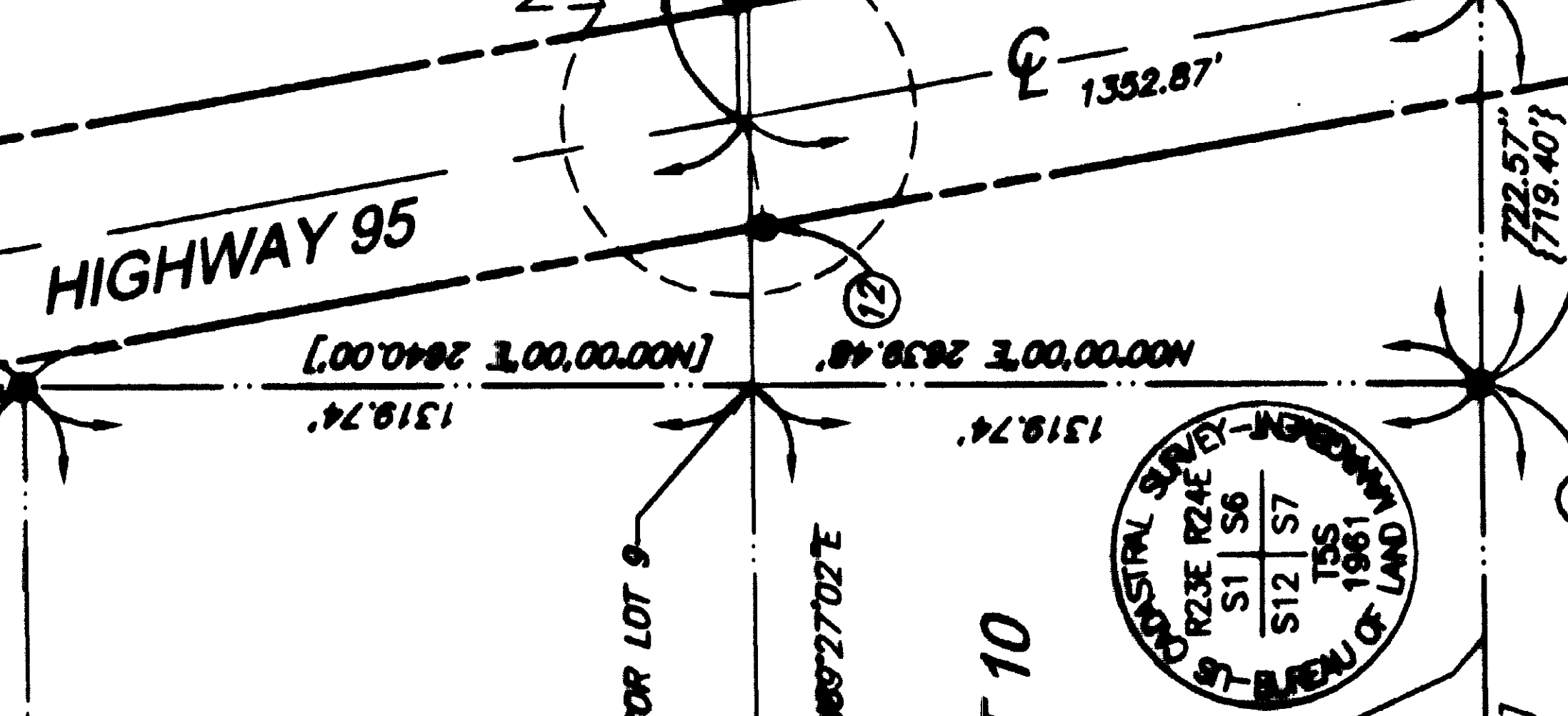
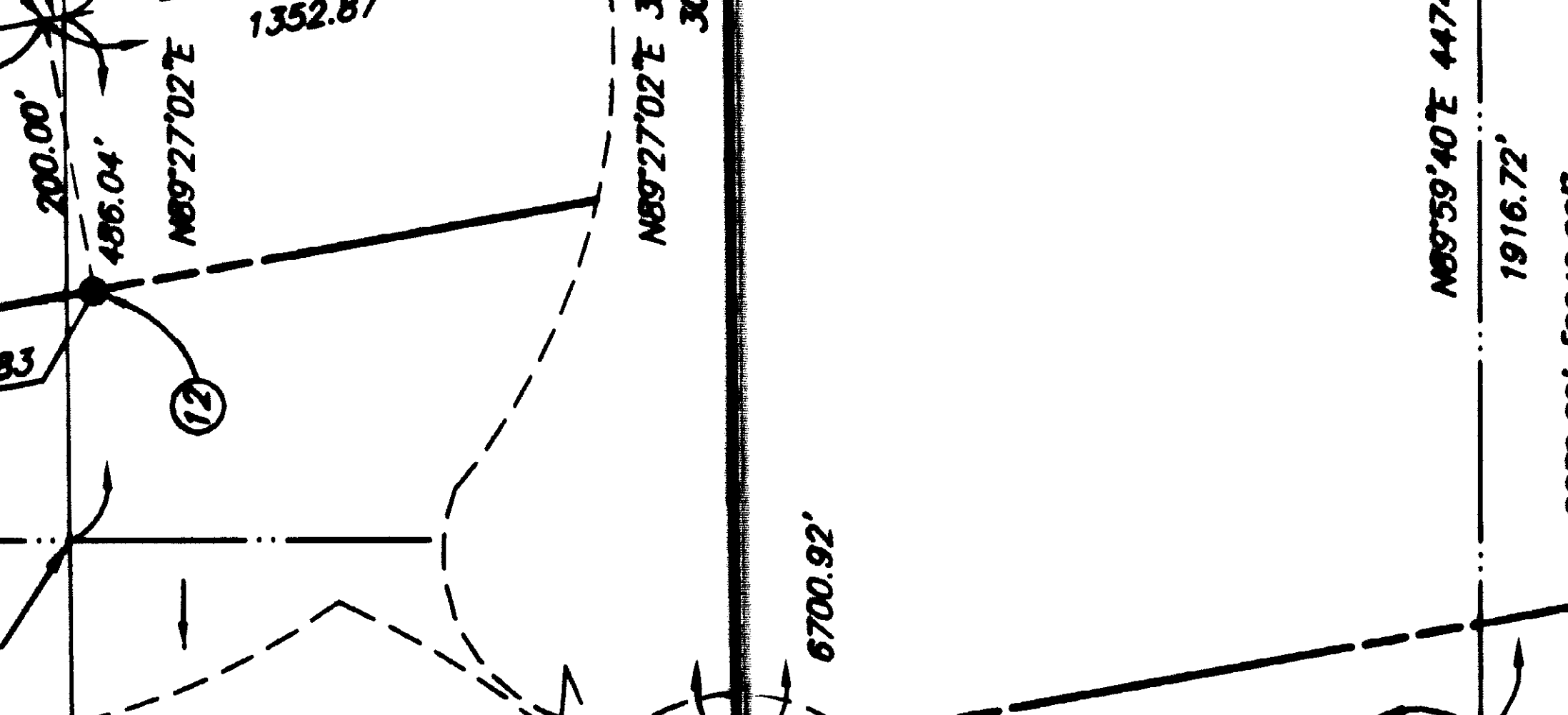
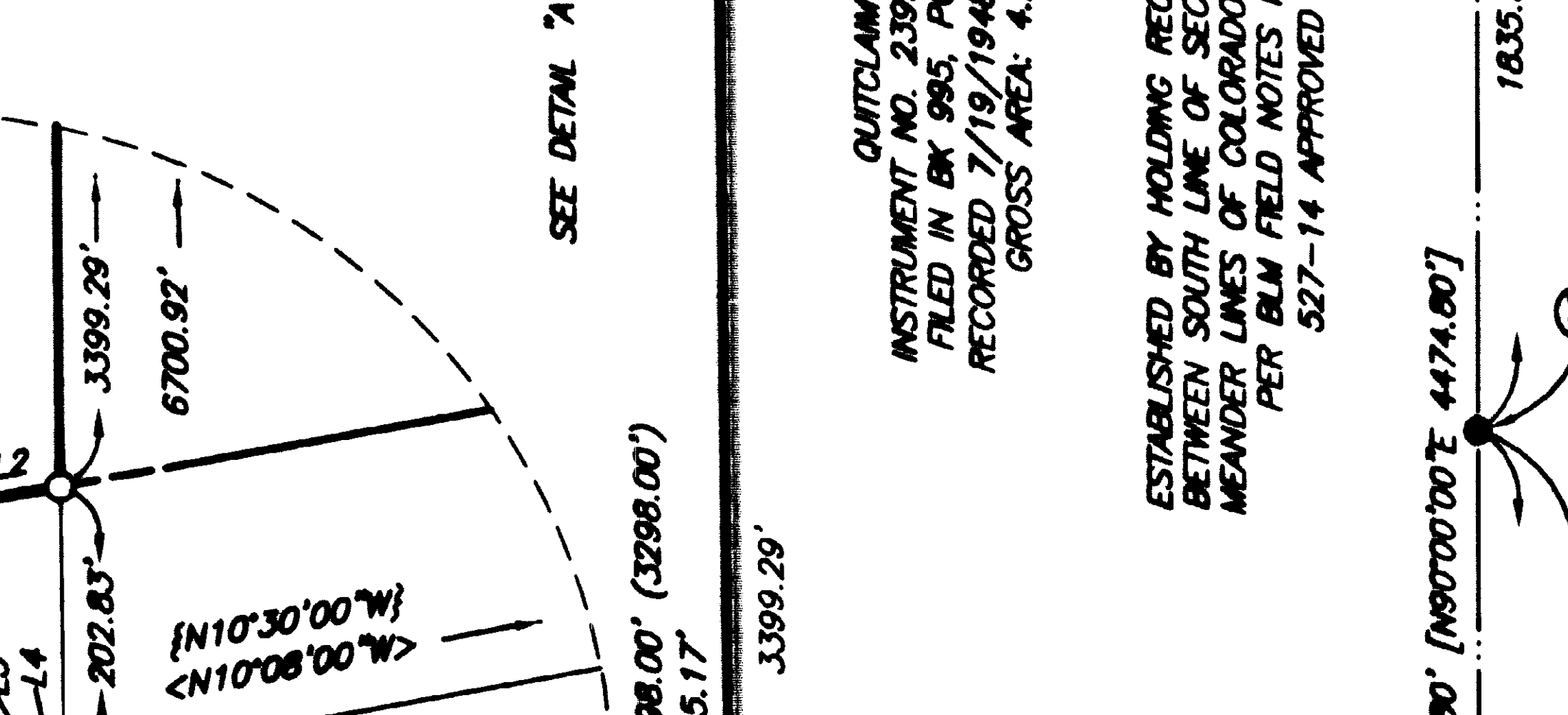
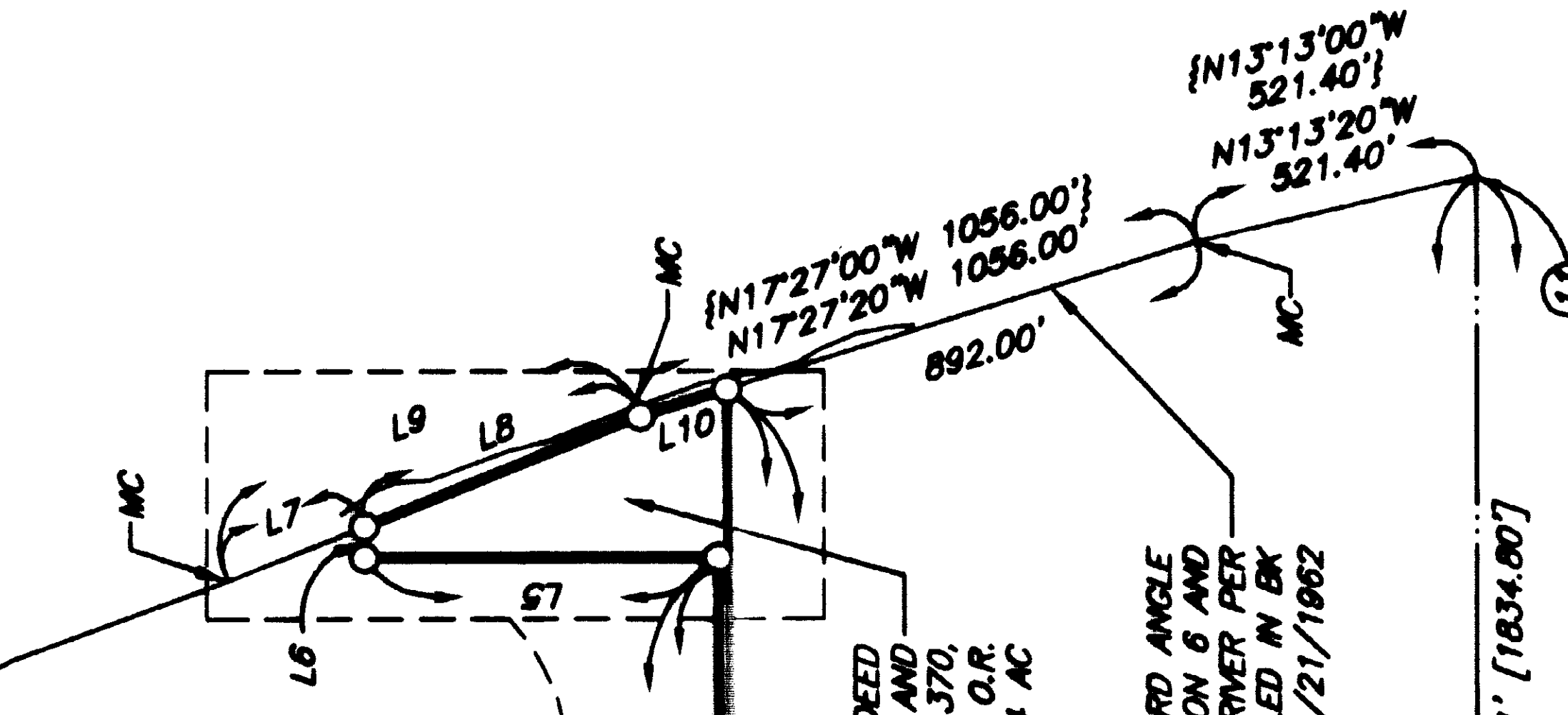
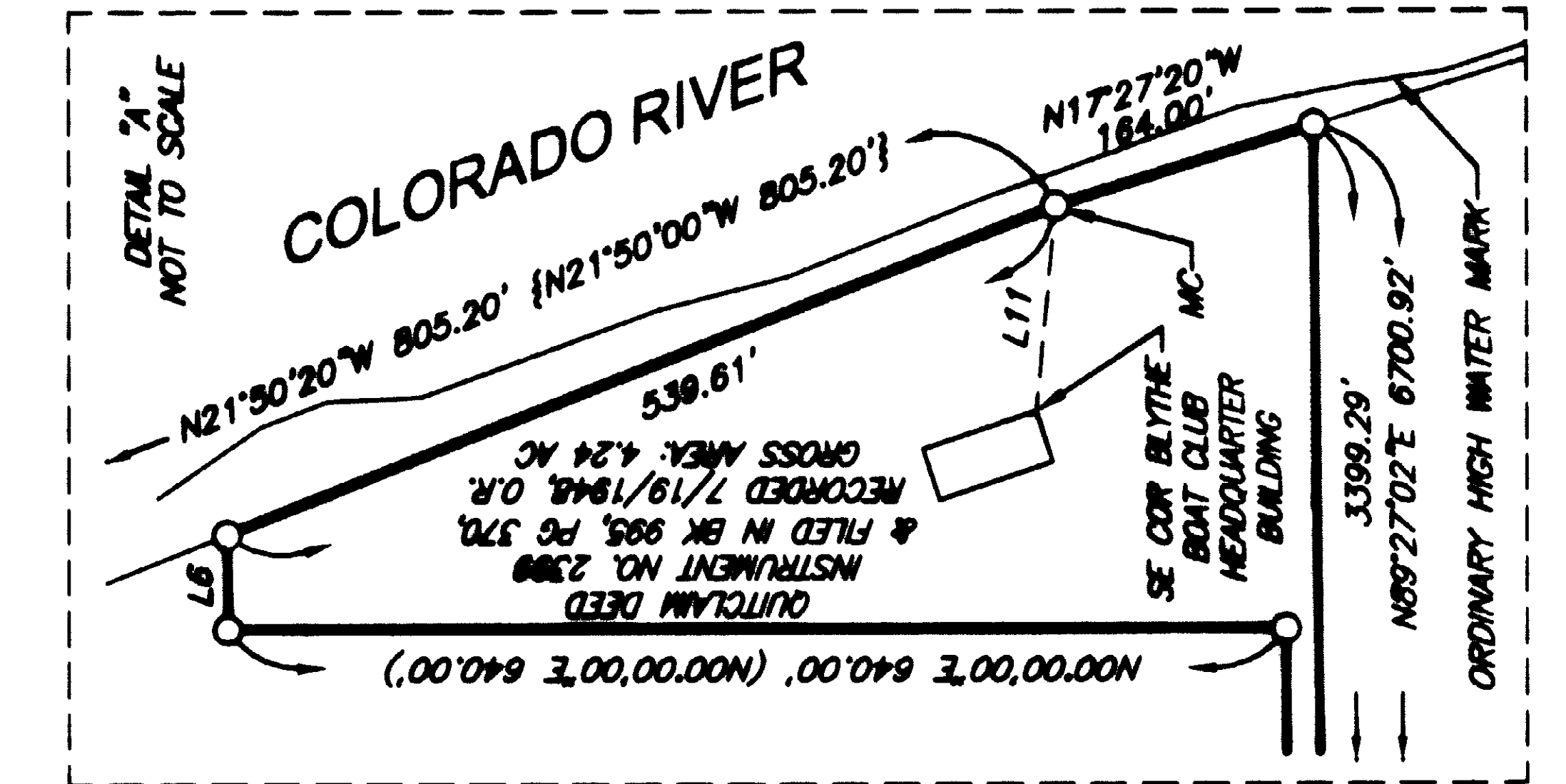


SURVEYOR'S STATEMENT
THIS MAP CORRECTLY REPRESENTS A SURVEY MADE BY ME OR UNDER MY DIRECTION IN CONFORMANCE WITH THE REQUIREMENTS OF THE PROFESSIONAL LAND SURVEYORS' ACT, AT THE REQUEST OF THE BLUETHINE BOAT CLUB, IN JANUARY, 2010.
Robert K. Holt
ROBERT K. HOLT P.E.
R.C.E. 27943
EXPIRATION DATE: 3/31/2012
DATE: 03/23/10



COUNTY SURVEYOR'S STATEMENT
THIS MAP HAS BEEN EXAMINED IN ACCORDANCE WITH SECTION 9766 OF THE PROFESSIONAL LAND SURVEYORS' ACT THIS 31ST DAY OF March 2010.
David H. Duda
KENNETH D. TEICH, COUNTY SURVEYOR
L.S. 5705
EXPIRATION DATE: 9/30/2011

- LEGEND**
- INDICATES FOUND MONUMENT AS NOTED
 - INDICATES SET 1 1/2" IP WITH BRASS TAG STAMPED TREE 27943, DN 0.2'
 - () INDICATES RECORD DATA INFORMATION PER INSTRUMENT NO. 2389 AND FILED IN BK 995, PG 370, RECORDED 7/19/1948, OFFICIAL RECORDS OF RIVERSIDE COUNTY
 - < > INDICATES RECORD INFORMATION PER CALTRANS RIGHT OF WAY MAP NO. 95801 THROUGH 95803
 - [] INDICATES RECORD INFORMATION PER INDEPENDENT RESURVEY AND ACCRETION SURVEY FOR TOWNSHIP 5 SOUTH, RANGE 23 AND 24 EAST, SBM DATED 7/22/1958 AND 5/21/1962
 - { } INDICATES RECORD INFORMATION PER PER BLM FIELD NOTES FILED IN BK 527-14 APPROVED 5/21/1962
 - SNF SEARCHED NOT FOUND
 - MC MEANDER CORNER



LINE DATA

NO.	BEARING	DISTANCE
L1	N89°33'48\"W	333.99'
L2	N89°19'00\"W	333.96'
L3	N107°38'36\"W	20.00'
L4	N107°38'36\"W	12.43'
L5	N107°38'36\"W	7.57'
L6	N107°38'36\"W	640.00'
L7	N89°27'02\"E	57.70'
L8	N21°50'20\"W	300.00'±
L9	N21°50'20\"W	265.59'
L10	N21°50'20\"W	539.61'
L11	N21°50'20\"W	805.20'
L12	N21°50'20\"W	805.20'
L13	N17°27'00\"W	164.00'
L14	N84°36'04\"W	126.22'
L15	N84°00'00\"W	128.70'

MONUMENTATION NOTES

- ① NW COR S 1 PD 2 1/2" IP WITH 3 1/4" BLM BRASS DISC, STAMPED AS SHOWN HEREON, IN THE CENTER OF A MOUND OF STONE, UP 1.7' PER BLM FIELD NOTES FILED IN BK 447-11, PG 11 APPROVED 4/21/1917
- ② W 1/4 COR S 1 SEARCHED NOT FOUND, ESTABLISHED BY GRANT BOUNDARY ADJUSTMENT BETWEEN FOUND MONUMENT ① AND ③ PER BLM INDEPENDENT RESURVEY
- ③ SW COR S 1 PD 2 1/2" IP WITH 3 1/4" BLM BRASS DISC, STAMPED AS SHOWN HEREON, IN THE CENTER OF A MOUND OF STONE, UP 0.3' PER BLM FIELD NOTES FILED IN BK 518-10, PG 13 APPROVED 7/22/1958
- ④ S 1/4 COR S 1 PD 2 1/2" IP WITH 3 1/4" BLM BRASS DISC, STAMPED AS SHOWN HEREON, IN THE CENTER OF A MOUND OF STONE, UP 0.1' PER BLM FIELD NOTES FILED IN BK 518-10, PG 13 APPROVED 7/22/1958
- ⑤ N 1/4 COR S 1 PD 2 1/2" IP WITH 3 1/4" BLM BRASS DISC, STAMPED AS SHOWN HEREON, IN THE CENTER OF A MOUND OF STONE, UP 0.7' PER BLM FIELD NOTES FILED IN BK 518-9, PG 2 APPROVED 7/22/1958

MONUMENTATION NOTES

- ⑥ AP S 1 PD 2 1/2" IP WITH 3 1/4" BLM BRASS DISC, STAMPED AS SHOWN HEREON, UP 0.9' PER BLM FIELD NOTES FILED IN BK 518-9, PG 2 APPROVED 7/22/1958
- ⑦ MC PD 2 1/2" IP WITH 3 1/4" BLM BRASS DISC, STAMPED AS SHOWN HEREON, IN THE CENTER OF A MOUND OF STONE, UP 0.3', NO REFERENCE, IN LIEU OF BLM BRASS CAP STAMPED "MC 1958" PER BLM FIELD NOTES FILED IN BK 518-9, PG 3 APPROVED 7/22/1958
- ⑧ E 1/4 COR S 1 PD 2 1/2" IP WITH 3 1/4" BLM BRASS DISC, STAMPED AS SHOWN HEREON, IN THE CENTER OF A MOUND OF STONE, UP 1.5' PER BLM FIELD NOTES FILED IN BK 527-14, PG 4 APPROVED 5/21/1962
- ⑨ SE COR S 1 PD 2 1/2" IP WITH 3 1/4" BLM BRASS DISC, STAMPED AS SHOWN HEREON, UP 0.4' PER BLM FIELD NOTES FILED IN BK 527-14, PG 2 APPROVED 5/21/1962

MONUMENTATION NOTES

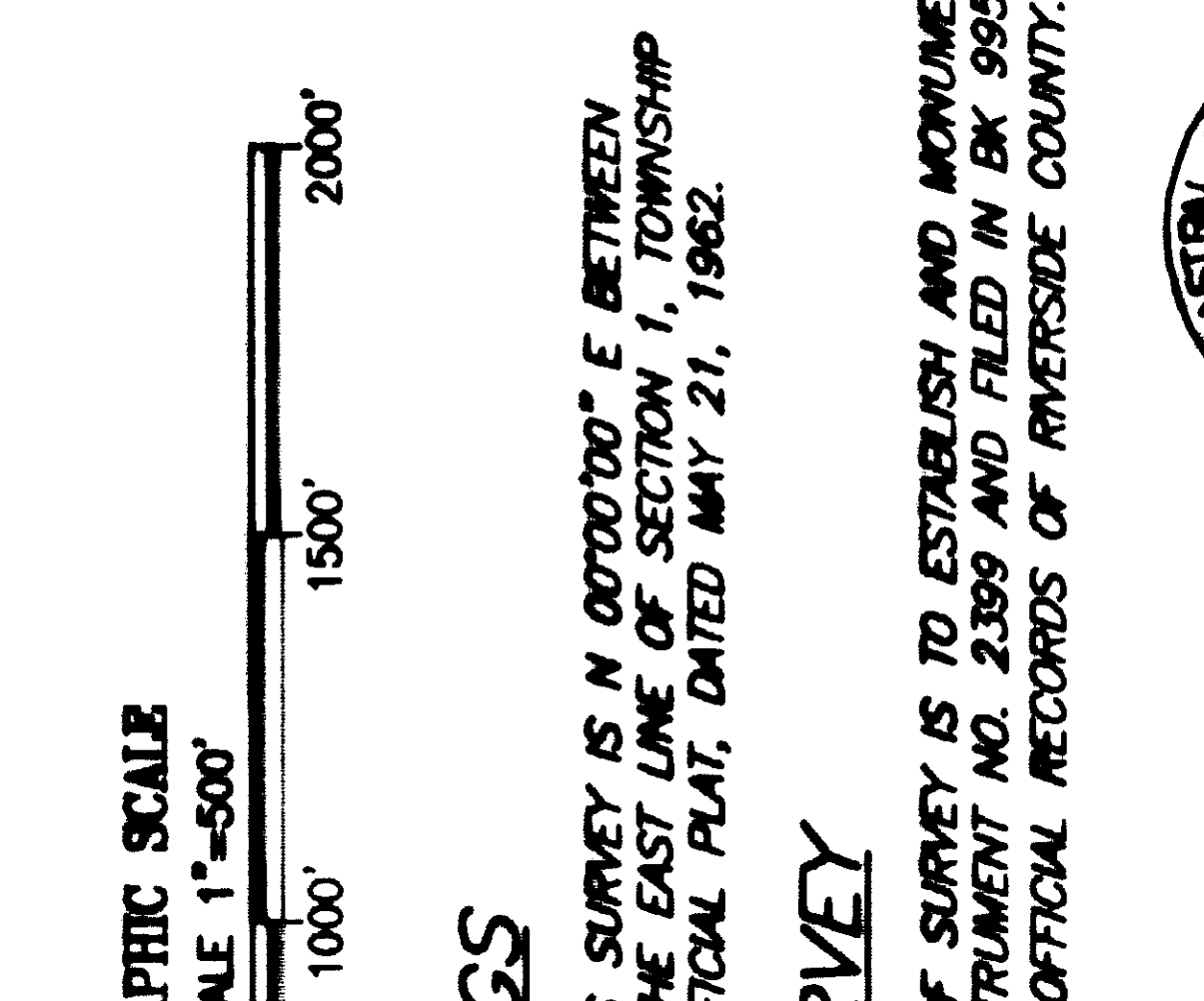
- ⑩ S 1/4 COR S 6 PD 2 1/2" IP WITH 3 1/4" ALLEGIBLE DISC, DN 1.2' PER BLM FIELD NOTES FILED IN BK 527-14, PG 3 APPROVED 5/21/1962
- ⑪ MC SNF, ESTABLISHED BY HOLDING PROLONGATION LINE OF THE SOUTH LINE OF SE 1/4 S 6, T5S, R24E, SBM AND THE RECORD DISTANCE AS SHOWN ON BLM FIELD NOTES FILED IN BK 527-14, PG 3 APPROVED 5/21/1962
- ⑫ RIGHT OF WAY MONUMENT - STA 667+43.83 SHOT AT THE BOTTOM PER CALTRANS RIGHT OF WAY MAP NO. 95802
- ⑬ 90' OFFSET FROM CENTERLINE OF HIGHWAY 95 - STA 729+02.12 P.C. PD 3" IP WITH ALLEGIBLE BRASS DISC, FLUSH PER CALTRANS RIGHT OF WAY MAP NO. 95803

MONUMENTATION NOTES

- ⑭ AP S 1 PD 2 1/2" IP WITH 3 1/4" BLM BRASS DISC, STAMPED AS SHOWN HEREON, UP 0.9' PER BLM FIELD NOTES FILED IN BK 518-9, PG 2 APPROVED 7/22/1958
- ⑮ MC PD 2 1/2" IP WITH 3 1/4" BLM BRASS DISC, STAMPED AS SHOWN HEREON, IN THE CENTER OF A MOUND OF STONE, UP 0.3', NO REFERENCE, IN LIEU OF BLM BRASS CAP STAMPED "MC 1958" PER BLM FIELD NOTES FILED IN BK 518-9, PG 3 APPROVED 7/22/1958
- ⑯ E 1/4 COR S 1 PD 2 1/2" IP WITH 3 1/4" BLM BRASS DISC, STAMPED AS SHOWN HEREON, IN THE CENTER OF A MOUND OF STONE, UP 1.5' PER BLM FIELD NOTES FILED IN BK 527-14, PG 4 APPROVED 5/21/1962
- ⑰ SE COR S 1 PD 2 1/2" IP WITH 3 1/4" BLM BRASS DISC, STAMPED AS SHOWN HEREON, UP 0.4' PER BLM FIELD NOTES FILED IN BK 527-14, PG 2 APPROVED 5/21/1962

MONUMENTATION NOTES

- ⑱ S 1/4 COR S 6 PD 2 1/2" IP WITH 3 1/4" ALLEGIBLE DISC, DN 1.2' PER BLM FIELD NOTES FILED IN BK 527-14, PG 3 APPROVED 5/21/1962
- ⑳ MC SNF, ESTABLISHED BY HOLDING PROLONGATION LINE OF THE SOUTH LINE OF SE 1/4 S 6, T5S, R24E, SBM AND THE RECORD DISTANCE AS SHOWN ON BLM FIELD NOTES FILED IN BK 527-14, PG 3 APPROVED 5/21/1962
- ㉑ RIGHT OF WAY MONUMENT - STA 667+43.83 SHOT AT THE BOTTOM PER CALTRANS RIGHT OF WAY MAP NO. 95802
- ㉒ 90' OFFSET FROM CENTERLINE OF HIGHWAY 95 - STA 729+02.12 P.C. PD 3" IP WITH ALLEGIBLE BRASS DISC, FLUSH PER CALTRANS RIGHT OF WAY MAP NO. 95803



BASIS OF BEARINGS
THE BASIS OF BEARINGS FOR THIS SURVEY IS IN 0°00'00" E BETWEEN TWO FOUND MONUMENTS ALONG THE EAST LINE OF SECTION 1, TOWNSHIP 23 EAST, SBM, ACCORDING TO OFFICIAL PLAT, DATED MAY 21, 1962.

PURPOSE OF SURVEY
THE PURPOSE OF THIS RECORD OF SURVEY IS TO ESTABLISH AND MONUMENT THE PROPERTY DESCRIBED IN INSTRUMENT NO. 2389 AND FILED IN BK 995, PG 370, RECORDED 7/19/1948, OFFICIAL RECORDS OF RIVERSIDE COUNTY.

