



## **Executive Summary: Wilton Rancheria's Gaming Project**

### **Introduction**

Wilton Rancheria, a landless, federally-recognized tribe ("Tribe"), has requested that the Department of Interior accept into trust the title to parcels of land in Sacramento County, California, totaling approximately 282 acres (the "Application Site"). The Tribe intends to develop a casino, hotel, event center, and associated facilities on the Application Site.

In 1927, the United States purchased the historical rancheria, comprised of approximately 38.8 acres near Wilton, California, for the Tribe. In 1964, the Wilton Rancheria's status as a federally-recognized tribe was terminated pursuant to the California Rancheria Act of 1958. On June 8, 2009, the Tribe was restored to federally-recognized status pursuant to a court-approved settlement agreement with the United States.

Pursuant its settlement agreement with the United States, Wilton Rancheria is entitled to submit a mandatory land-into-trust application for land at the historic rancheria. However, officials for the County of Sacramento and the City of Elk Grove previously expressed significant concerns regarding the possibility of a request that lands located at the former rancheria be taken into trust for gaming purposes due to the very rural nature of that immediate area. In addition, the Tribe is aware of landowners near the former rancheria who have expressed similar concerns. Out of deference to local officials and respect for the community at large, the Tribe sought alternative lands within the immediate historical area of Wilton Rancheria.

The Application Site is located in an unincorporated part of south Sacramento County, California, and is approximately 7.5 miles from the Tribe's historic rancheria. The Application Site is located within the City of Galt sphere of influence, north of Twin Cities Road between State Highway 99 and the Union Pacific Railroad tracks. The Sacramento County Assessor's parcel numbers (APNs) for the Application Site are 148-0010-018, 1480041-009, 148-0041-006, 148-0041-004, 148-0041-001, 148-0031-007, and 148-0010-060. Maps showing the Wilton Site are attached.

With the establishment of a gaming facility, the Tribe seeks to improve the economic status of the tribal government in the hope that it can better provide housing, health care, education, cultural programs, and other services to its members. The Tribe's request that the Application Site be put in to trust is the Tribe's first request for trust lands since the Tribe's 2009 restoration.

## **Purpose and Need**

The needs of Wilton Rancheria can in part be understood through an examination of the characteristics of the Tribe's people. Tribal members experience unusually high levels of poverty and are not as healthy when compared to other groups. Especially since termination, the Tribe has experienced high levels of poverty and low levels of income.

The Tribe's higher poverty rates have several sources. The larger proportion of children means that families are more likely to have non-earning members. The large number of single-parent households means that more families have only a single source of income. Finally, the incomes that those families earn are lower than average income generally. Given high unemployment and poverty rates and low levels of income, tribal social services are an important safety net.

Quite simply, current tribal services do not meet the needs of the members of Wilton Rancheria; in fact, they fall dramatically short. Every tribal department has a lengthy list of tribal members who cannot be served because of insufficient funding. The severe poverty and the serious health risks of Wilton Rancheria are dramatic indicators of the need for more stable and long term funding. The Tribe's current budget is wholly inadequate to meet the community's needs. The Tribe must develop a sustainable source of reliable revenue in order to meet even the Tribe's most minimal of needs.

The purpose and need for the gaming project is to improve the Tribe's short-term and long-term economic condition and promote its self-sufficiency, both with respect to its government operations and its members. The gaming project will assist the Tribe in meeting the following objectives:

- Strengthening the socioeconomic status of the Tribe by providing a revenue source that could be used to fund tribal government operations and programs;
- Strengthening the socioeconomic status of tribal members by funding a variety of social, housing, governmental, administrative, educational, health, and welfare services to improve quality of life and general welfare;
- Providing capital for other tribal economic development and investment opportunities;
- Providing business and job opportunities for tribal members and non-tribal members; and
- Improving local communities through economic opportunities and donation to charitable organizations.

Development and operation of the Tribe's gaming project would be an opportunity to create a skilled and experienced tribal workforce. The gaming facility will also create many job opportunities for non-tribal members. The Tribe anticipates that the gaming facility will create 2000 full-time positions.

## **Gaming Project Description**

The Tribe's planned gaming facility at the Application Site will consist of a 601,780 square-foot casino-resort facility, a 12-story 302-room hotel, a 48,150 square-foot convention center, and a tribal festival ground. The gaming component of the facility will consist of an approximately 110,260 square-foot gaming floor. A total of 3,500 surface parking spaces could be constructed, and site access would be provided at the terminus of West Stockton Boulevard to the immediate east of the site. The Tribe is currently considering both on-site and off-site water supply and wastewater treatment options.

## **Socioeconomic Conditions - Effects and Mitigation**

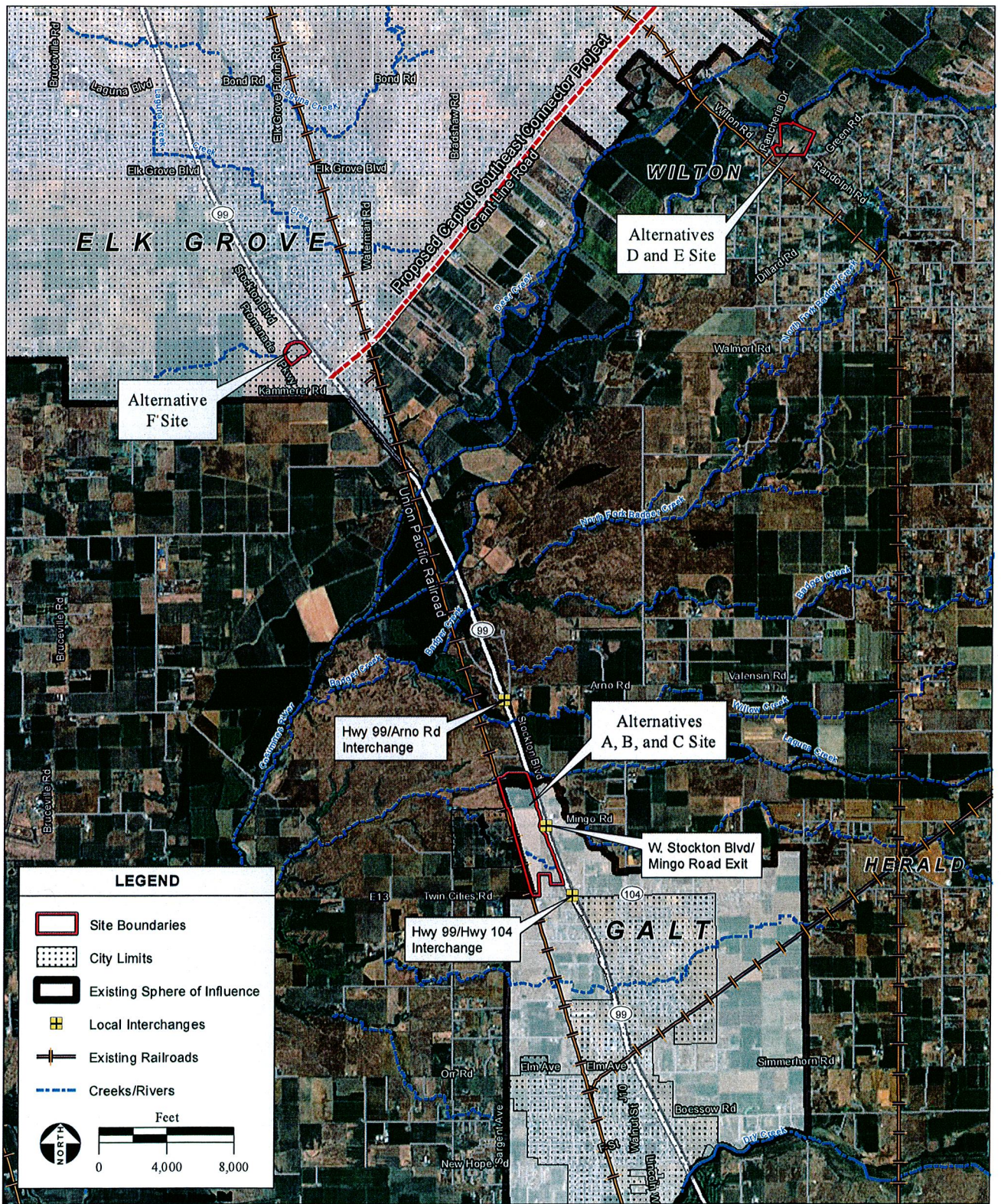
Development and operation of the gaming project will result in the creation of 2000 full-time jobs and will therefore generate significant output to a variety of businesses within the region. Furthermore, development of the gaming project will result in positive net impacts to tax revenues for local jurisdictions because of secondary economic activity generated by tribal gaming.

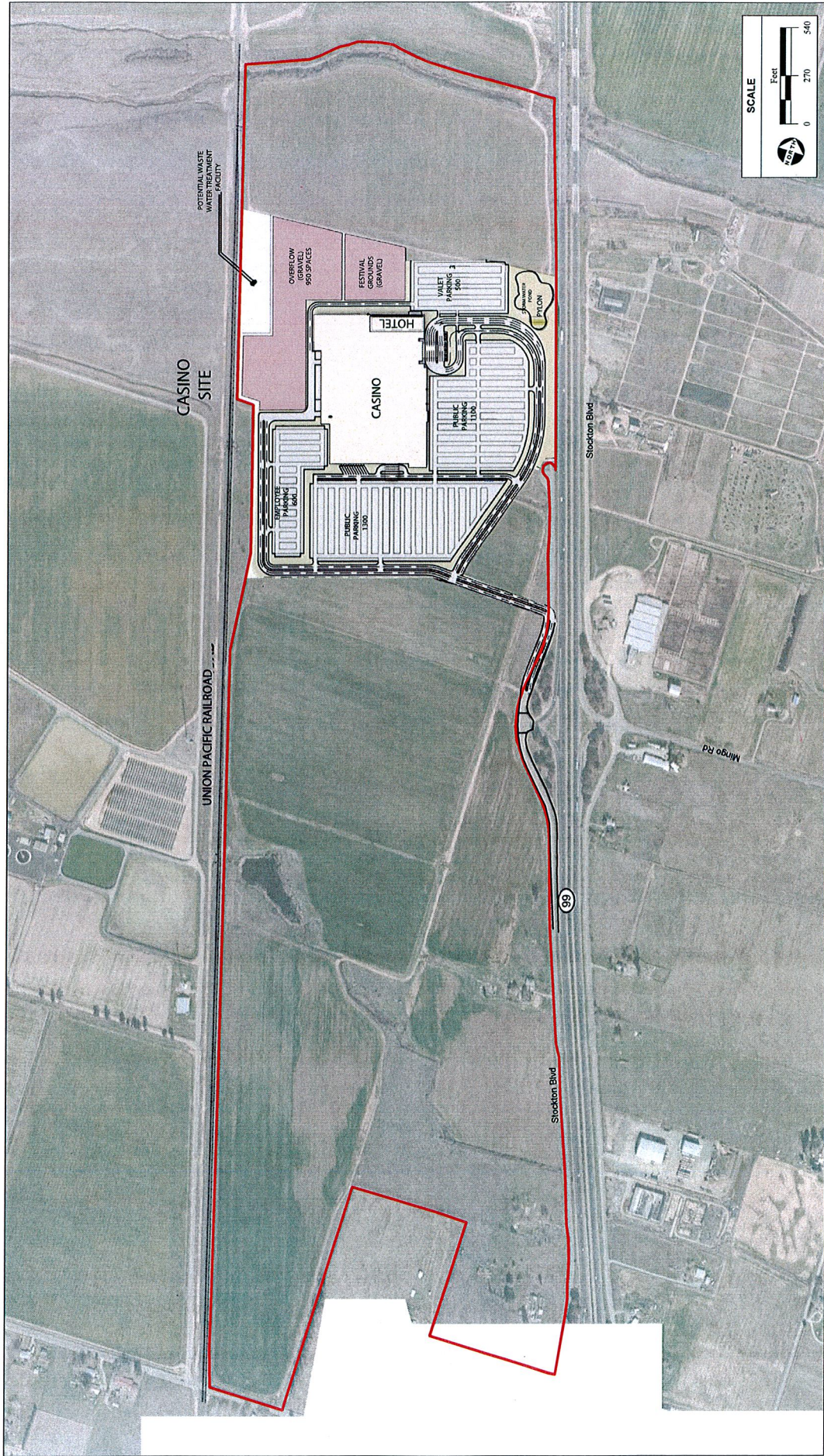
The development of the gaming project could potentially affect crime because the facility will introduce a large number of patrons and employees into the community on a daily basis. However, increased tax revenues resulting from the gaming project and local agreements between the Tribe, the County of Sacramento, and the City of Galt will fund expansion of law enforcement services required to accommodate planned growth.

The gaming project could also potentially affect the incidence of problem gaming. As a result, the Tribe intends to contribute annually to a program that treats problem gamblers. In order to maximize the effectiveness of the payments, the organization that receives the payments for problem gambling treatment will serve the Sacramento County region and be accessible to County residents.

The Tribe intends to educate employees to recognize the signs of problem gamblers. In addition, employees will be trained to provide information to those seeking help with problem gambling. The Tribe will also ensure that ATMs are not visible from gaming machines and gaming tables and will implement a system for voluntary exclusion from the facility.

Wilton Rancheria intends to train employees to recognize domestic violence and sexual assault situations. The gaming facility will display domestic violence hotline numbers. The Tribe further intends to work with local agencies in domestic violence and sexual assault prevention.





Wilton Rancheria Fee-to-Trust and Casino Scoping Report / 212544

**Figure 3**  
Alternative A – Proposed Action

SOURCE: K&J Juba Architects, 1/10/2014, Microsoft aerial photograph, 2/2/2012, AES, 2014