

Appendix B –2
Aerial Photographs of Tribal Development Projects
Flight Date: March 14, 2002



Plate 1: View of the Pala Casino from the East.



Plate 2: View of the Pala Casino from the Northwest.



Plate 3: View of the Pala Casino from the South.

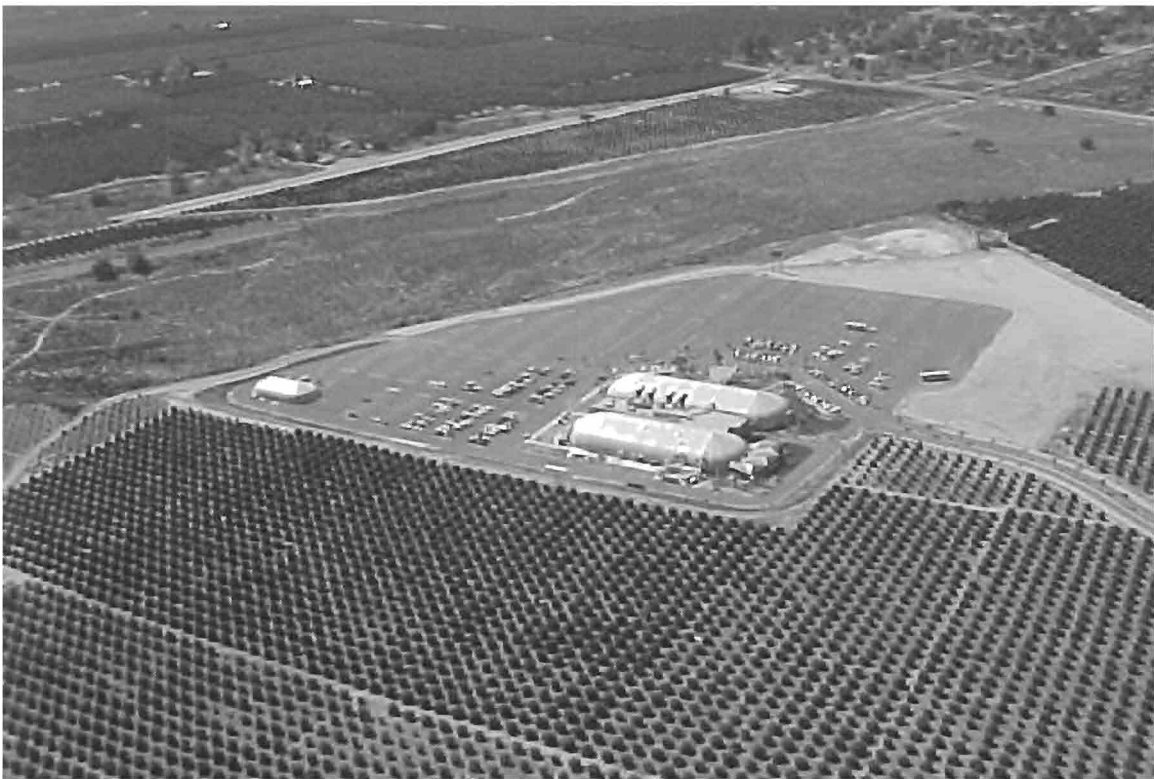


Plate 4: Close-up View of Casino Pauma Grading Activities from the Southwest.

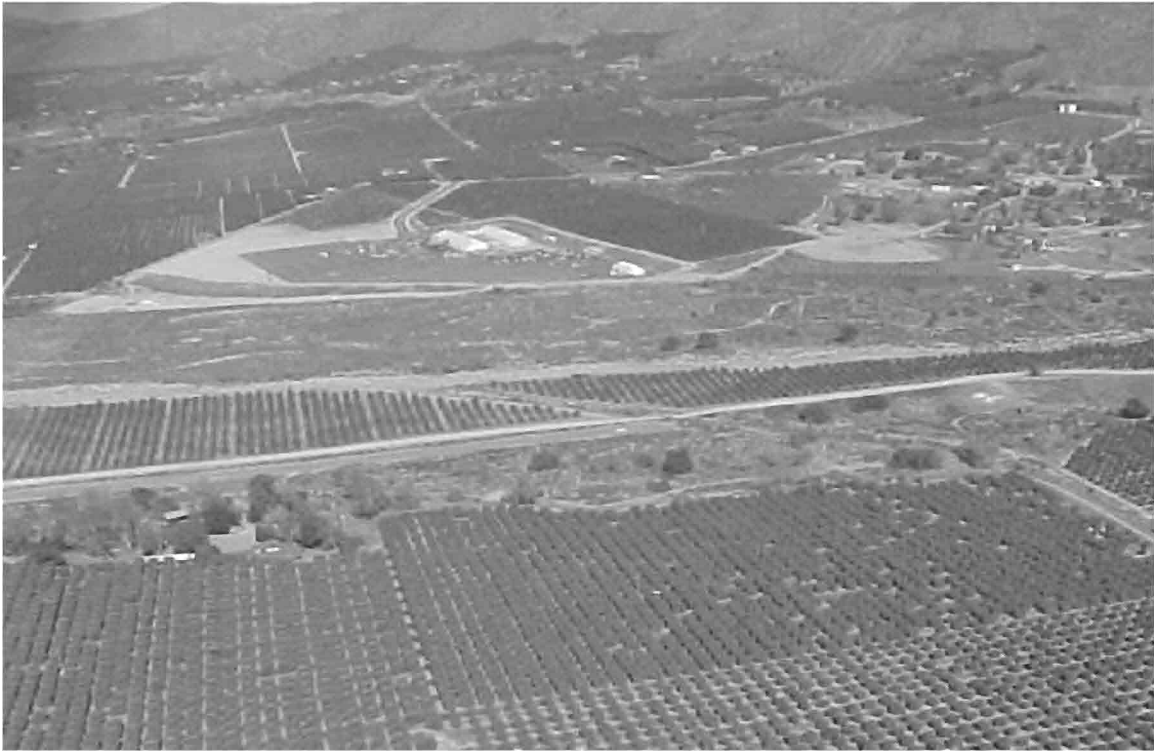


Plate 5: Landscape View of the Casino Pauma from the East.



Plate 6: Close-up View of the Rincon Casino from the West.



Plate 7: Close-up View of the Rincon Casino from the Northwest.



Plate 8: View of the Rincon Casino from the East.



Plate 9: View of the Rincon Casino from the West.



Plate 10: Close-up View of the San Pasqual Casino from the East.



Plate 11: View of the San Pasqual Casino from the Southeast.



Plate 12: View of the San Pasqual Casino from the North.



Plate 13: View of the Proposed Ewiiapaayp Tribal Health Clinic Site from the Southwest.



Plate 14: View of the Proposed Ewiiapaayp Tribal Health Clinic Site from the East.



Plate 15: View of the Tribal Health Clinic, Site of the Proposed Ewiiapaayp Casino, from the South.



Plate 16: View of the Tribal Health Clinic, Site of the Proposed Ewiiapaayp Casino, from the Southwest.



Plate 17: Close-up View of the Tribal Health Clinic, Site of the Proposed Ewiiapaayp Casino, from the North.



Plate 18: View of the Viejas Casino and Turf Club, and Outlet Center from the Southeast.



Plate 19: Close-up View of Viejas Facilities from the West.



Plate 20: View of Sycuan looking West.



Plate 21: Close-up View of Sycuan Casino's Eastern Parking Lots from the East.



Plate 22: Close-up View of Campo (Golden Acorn) Casino from the Northeast.



Plate 23: View of Campo (Golden Acorn) Casino from the North.



Plate 24: View of Campo (Golden Acorn) Casino Drainages from the North.



Plate 25: View of Campo (Golden Acorn) Casino from the Southeast.